

...PRELIMINARY DAMAGE SURVEY RESULTS FOR LENOX...TAYLOR COUNTY IOWA...

THE STORM SURVEY INVESTIGATION HAS BEEN COMPLETED.

...TWO TORNADOES IMPACTED LENOX...

THE FOLLOWING IS A PRELIMINARY ASSESSMENT FOR THE DAMAGE THAT
OCCURRED IN LENOX...TAYLOR COUNTY IOWA ON MAY 11...2011.

* EVENT DATE: MAY 11...2011

* TORNADO NUMBER 1

* ESTIMATED START TIME: 438 PM CDT

* EVENT TYPE: (EF0) TORNADO

* EVENT LOCATION: LENOX

* PEAK WIND: 80 MPH

* AVERAGE PATH WIDTH: 3/10 MILE WIDE

* PATH LENGTH: 6/10 OF A MILE

* INJURIES: NONE

* FATALITIES: NONE

* DISCUSSION/DAMAGE: THE TORNADO TOUCHED DOWN IN SOUTH CENTRAL
LENOX ALONG SOUTH MAPLE STREET...BETWEEN WEST PLATTE STREET AND
WEST IOWA STREET BEFORE MOVING NORTH IN A CURVING PATH UNTIL IT
REACHED WALNUT STREET. THE TORNADO THEN MOVED GENERALLY DUE
NORTH... ALONG WALNUT STREET EVENTUALLY DISSIPATING ABOUT ONE
BLOCK NORTH OF WEST VAN BUREN STREET AROUND 440 PM CDT. THE
DAMAGE PATH WAS GENERALLY DIFFUSE WITH TREE DAMAGE AND SHINGLES
REMOVED FROM BUILDINGS. THE GREATEST DAMAGE OCCURRED ALONG NORTH
MAIN STREET WHERE TWO BRICK BUILDINGS RECEIVED ROOF AND UPPER FACADE
DAMAGE.

* EVENT DATE: MAY 11...2011

* TORNADO NUMBER 2

* ESTIMATED START TIME: 443 PM CDT

* EVENT TYPE: (EF1) TORNADO

* EVENT LOCATION: LENOX

* PEAK WIND: 105 MPH

* AVERAGE PATH WIDTH: 3/10 MILE WIDE

* PATH LENGTH: 1.2 MILES

* INJURIES: NONE

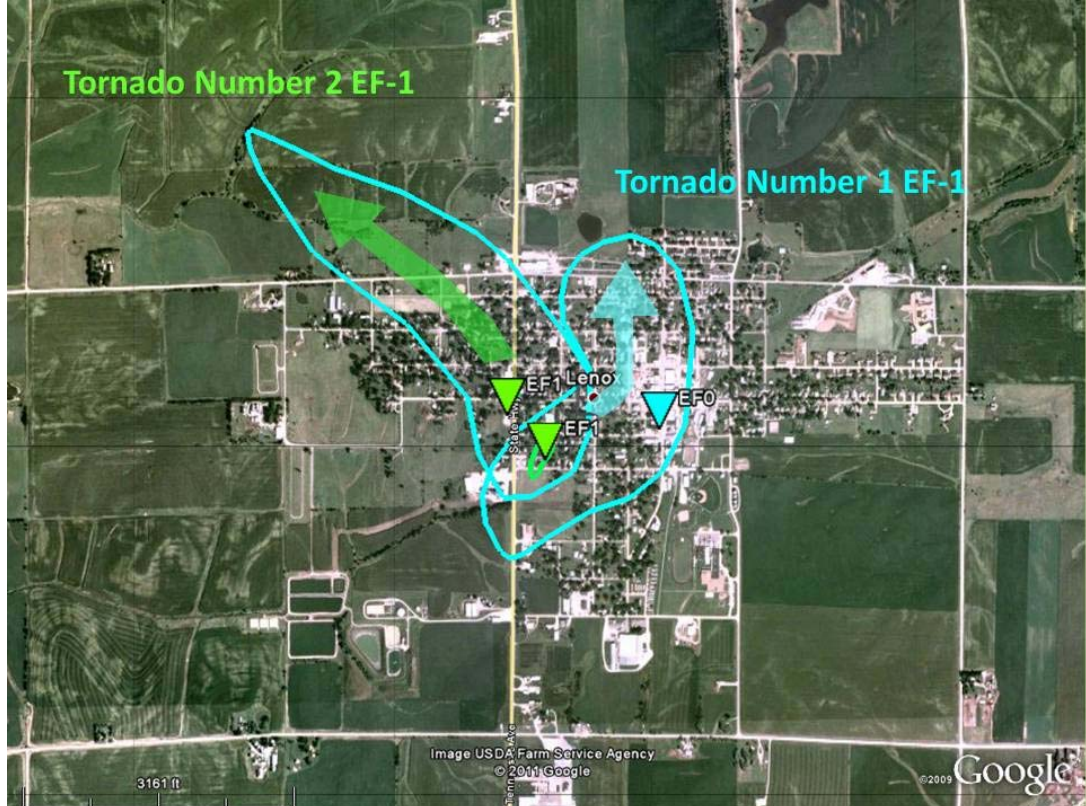
* FATALITIES: NONE

* DISCUSSION/DAMAGE: THE TORNADO TOUCHED DOWN IN THE SOUTHWEST
PART OF LENOX NEAR THE INTERSECTION OF STATE HIGHWAY 49 AND WEST
PLATTE STREET...ONLY A COUPLE BLOCKS SOUTHWEST OF THE TOUCHDOWN
LOCATION OF TORNADO NUMBER 1. THE TORNADO TRAVELED NORTHWARD
ALONG STATE HIGHWAY 49...WITH THE GREATEST DAMAGE OCCURRING
SHORTLY AFTER TOUCHDOWN ALONG HIGHWAY 49 BETWEEN WEST IOWA
STREET AND WEST ILLINOIS STREET. IN THAT AREA...ONE HOUSE
SUSTAINED DAMAGE TO A SECOND STORY DORMER. ALSO IN THAT AREA...A
MANUFACTURED HOME ON A FOUNDATION HAD APPROXIMATELY ONE HALF OF
ITS ROOF REMOVED. THE TORNADO THEN CONTINUED NORTH ALONG STATE
HIGHWAY 49 FROM HERE... GENERALLY CAUSING TREE DAMAGE AND
SHINGLES TO BE REMOVED FROM ROOFS. EVENTUALLY THE TORNADO TURNED
NORTHWEST JUST NORTH OF WEST TEMPLE STREET WHERE AN OLDER HOME
WHICH HOUSED A BUSINESS HAD ITS ROOF REMOVED. SHINGLE AND TREE
DAMAGE CONTINUED AS THE TORNADO TRACKED NORTHWEST BEFORE FINALLY
EXITING LENOX ALONG VAN BUREN STREET WEST OF NORTH SPEAR STREET.
THE TORNADO CONTINUED OVER OPEN FIELDS BEFORE DISSIPATING ABOUT
ONE HALF MILE NORTHWEST OF LENOX AROUND 448 PM CDT.

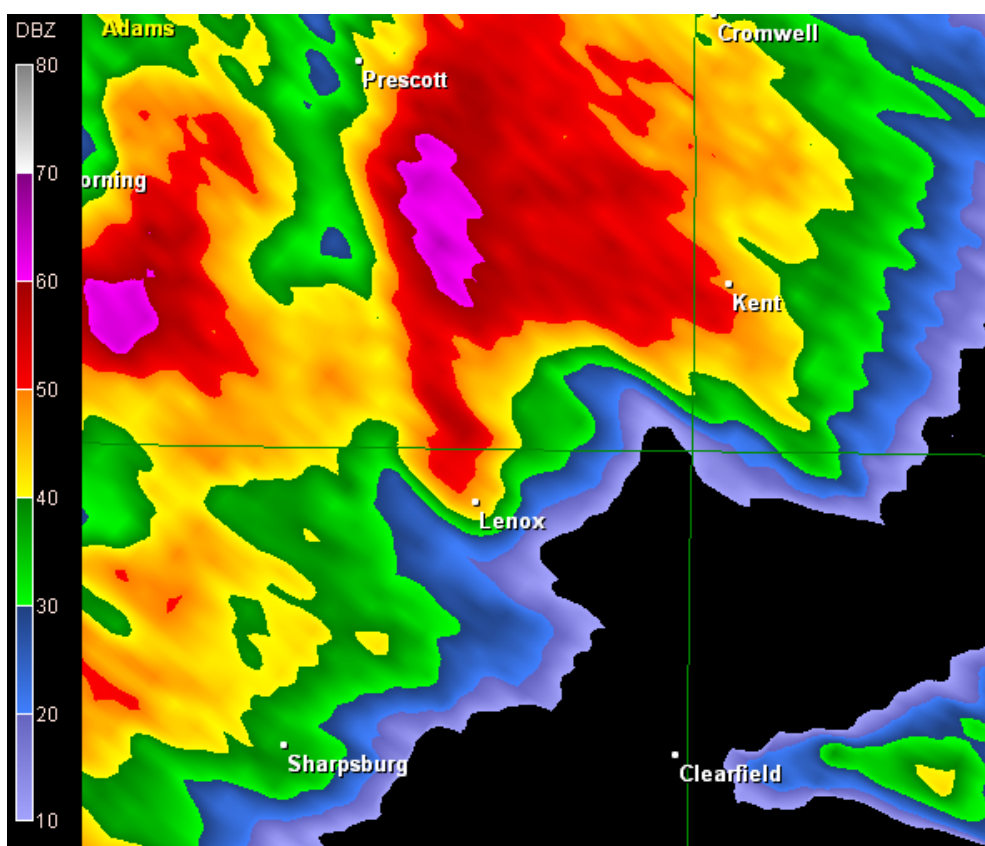
&&

FOR REFERENCE...THE ENHANCED FUJITA TORNADO SCALE CLASSIFIES
TORNADOES INTO THE FOLLOWING CATEGORIES:

- EF0...WIND SPEEDS 65 TO 85 MPH.
- EF1...WIND SPEEDS 86 TO 110 MPH.
- EF2...WIND SPEEDS 111 TO 135 MPH.
- EF3...WIND SPEEDS 136 TO 165 MPH.
- EF4...WIND SPEEDS 166 TO 200 MPH.
- EF5...WIND SPEEDS GREATER THAN 200 MPH.



Damage tracks for the two tornadoes in Lenox.



Hook echo over Lenox at the time of the tornadoes.