

National Weather Service Medford

# April 2016 Climate Summary



\*All data are considered preliminary and is subject to change per quality control standards performed by NCEI.

# April 2016 Weather Review

Despite April 2016 seeing several high temperature records, it is best described as a standard transitional month from the soggy winter months toward the warmer and drier summer pattern. The beginning of the month started off with well above normal temperatures and a few weak systems which brought light showers to the area. Then, winds turned offshore bringing much warmer and drier air to southern Oregon and northern California between the 6<sup>th</sup> and the 8<sup>th</sup>. Several record high temperatures were broken across southern Oregon and northern California during this time. In fact, both Medford and Roseburg set the record for the earliest 90° day which occurred on the 7<sup>th</sup>.

Temperatures quickly shifted back toward normal over the next few days as a strong cold front progressed through. This cold front brought strong winds to southwest Oregon as a result of an organized line of thunderstorms that collapsed once it reached the coast. These strong winds caused numerous power outages across southwest Oregon along with multiple reports of downed trees and tree branches.

The second half of April saw several swings between warm, dry days and wet, cool days. It is worth noting that more high temperature records were broken across the area again around the 17<sup>th</sup> – 18<sup>th</sup> as another thermal trough moved inland. Finally, after several showery days to close out the month, a third thermal trough pattern set up on the 30<sup>th</sup> to close out April with one last mild and dry day.

# Average Temperatures

	<i>Average (°F)</i>	<i>Departure from Normal</i>	<i>Average Max (°F)</i>	<i>Departure from Normal</i>	<i>Average Min (°F)</i>	<i>Departure from Normal</i>
<b>North Bend</b>	54.6	+5.4	61.8	+6.5	47.4	+4.3
<b>Roseburg</b>	58.3	+6.1	70.4	+8.0	46.2	+4.2
<b>Medford</b>	58.2	+5.4	72.1	+7.2	44.4	+3.6
<b>Klamath Falls</b>	48.1	+5.0	63.5	+7.0	32.7	+3.0
<b>Montague, CA</b>	52.3	+5.2	67.9	+7.0	36.7	+3.5
<b>Mt. Shasta City, CA</b>	52.6	+5.4	66.2	+5.3	39.1	+5.7
<b>Alturas, CA</b>	48.9	+5.7	64.7	+6.9	33.1	+4.4

*April was a very warm month with multiple climate sites seeing average temperatures, average max temperatures, and average minimum temperatures fall in the top ten warmest Aprils on record.*

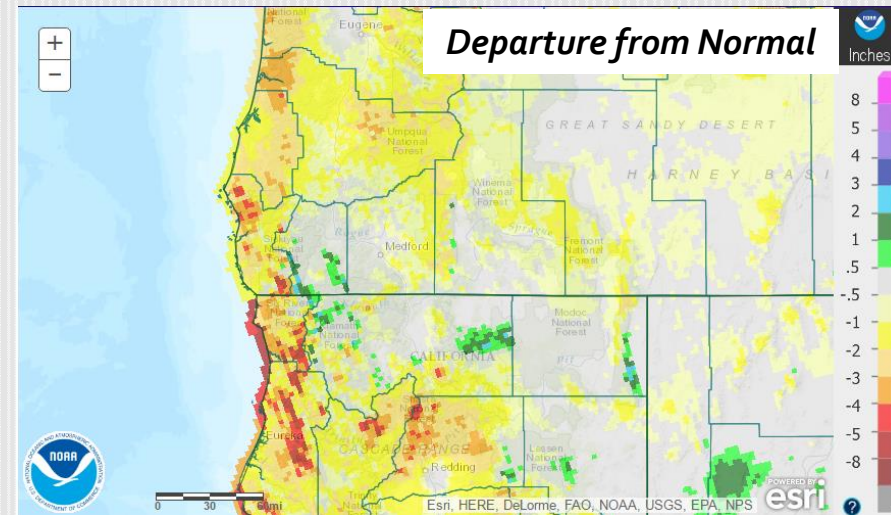
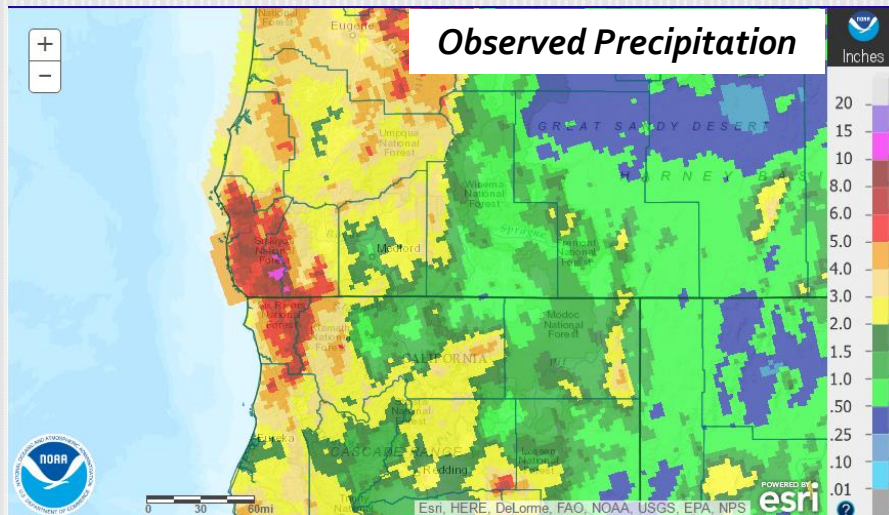
# Monthly Max & Min Temperatures

	<i>Max (°F)</i>	<i>Date(s)</i>	<i>Min (°F)</i>	<i>Date(s)</i>
<i>North Bend</i>	86°	17 <sup>th</sup>	39°	26 <sup>th</sup>
<i>Roseburg</i>	91°*	7 <sup>th</sup> & 18 <sup>th</sup>	37°	26 <sup>th</sup>
<i>Medford</i>	91°*	7 <sup>th</sup> & 18 <sup>th</sup>	34°	26 <sup>th</sup>
<i>Klamath Falls</i>	81°	7 <sup>th</sup>	18°	26 <sup>th</sup>
<i>Montague, CA</i>	84°	7 <sup>th</sup>	26°	26 <sup>th</sup>
<i>Mt. Shasta City, CA</i>	85°	7 <sup>th</sup>	31°	26 <sup>th</sup>
<i>Alturas, CA</i>	80°	7 <sup>th</sup>	22°	5 <sup>th</sup>

\*Earliest 90° day on record

# Precipitation

	<i>Total</i>	<i>Departure from Normal</i>	<i>Greatest 24-hr Total</i>	<i>Date(s)</i>
<b>North Bend</b>	3.41"	-1.76"	0.89"	14 <sup>th</sup>
<b>Roseburg</b>	2.32"	-0.50"	1.05"	13 <sup>th</sup> – 14 <sup>th</sup>
<b>Medford</b>	0.96"	-0.42"	0.37"	13 <sup>th</sup> – 14 <sup>th</sup>
<b>Klamath Falls</b>	0.69"	-0.68"	0.35"	22 <sup>nd</sup>
<b>Montague, CA</b>	0.78"	-0.78"	0.35"	21 <sup>st</sup> – 22 <sup>nd</sup>
<b>Mt. Shasta City, CA</b>	1.9"	-1.03"	0.82"	22 <sup>nd</sup>
<b>Alturas, CA</b>	1.32"	-0.24"	0.64"	9 <sup>th</sup> – 10 <sup>th</sup>

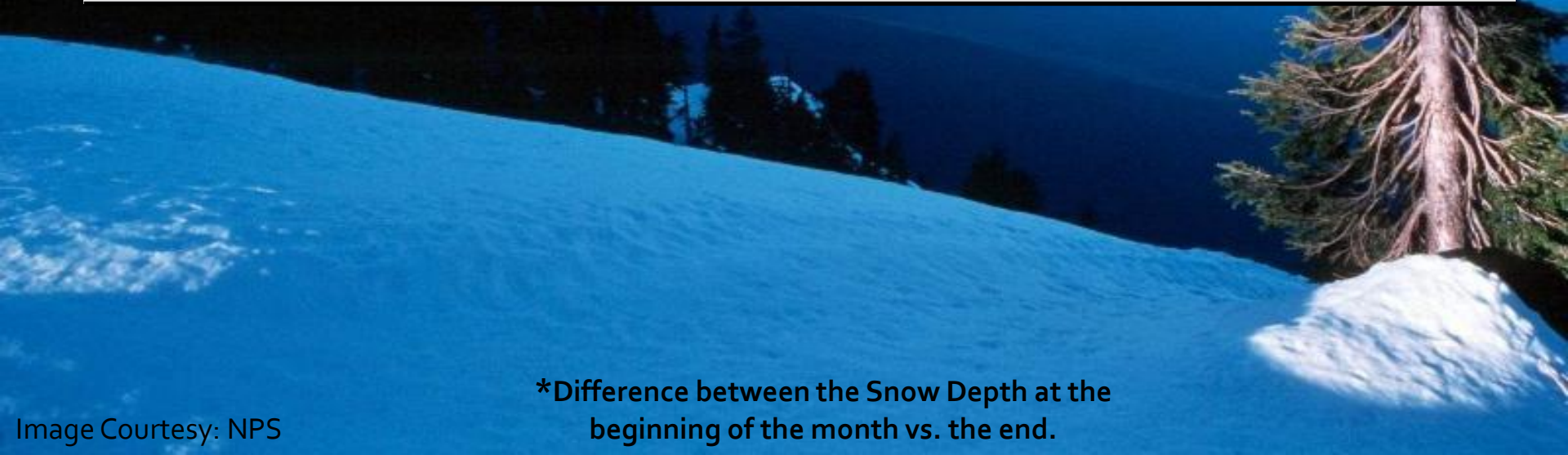




# Crater Lake

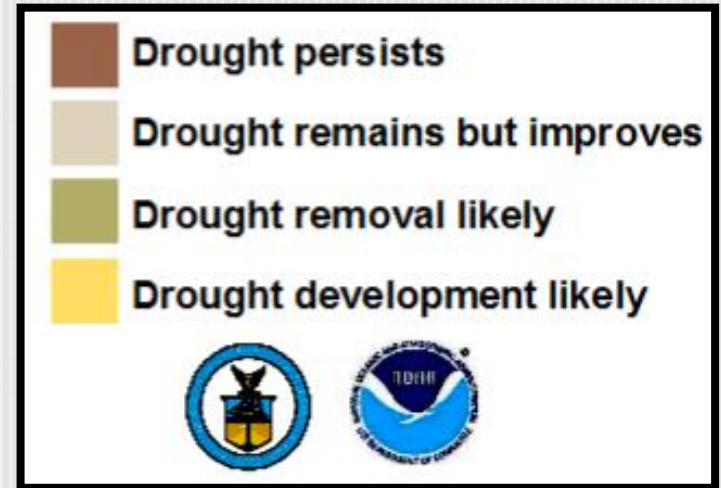
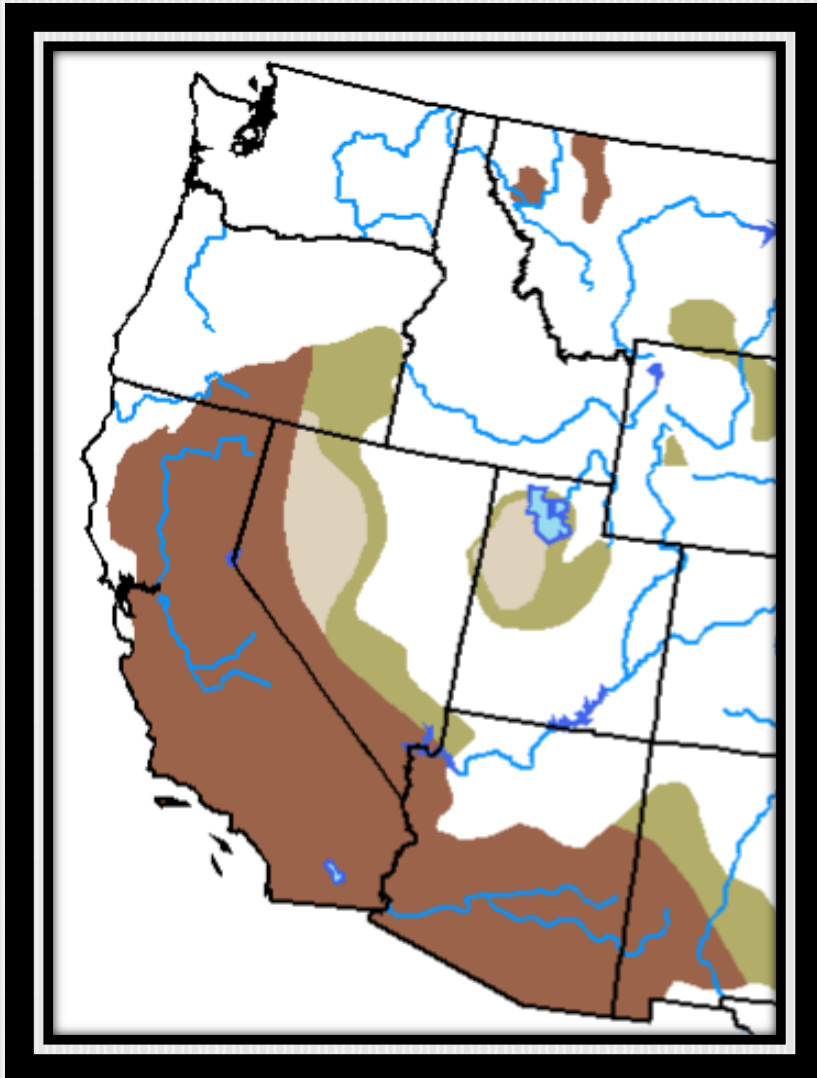


<i>Highest Max Temp (°F)</i>	<i>Lowest Min Temp (°F)</i>	<i>Total Precipitation</i>	<i>Total Snowfall</i>	<i>Snow Depth as of: 4/30/2016</i>	<i>Change in Snow Depth*</i>
62° (8 <sup>th</sup> & 19 <sup>th</sup> )	14° (26 <sup>th</sup> & 27 <sup>th</sup> )	3.68"	27.3"	92"	-26"



\*Difference between the Snow Depth at the beginning of the month vs. the end.

# Drought Outlook: May

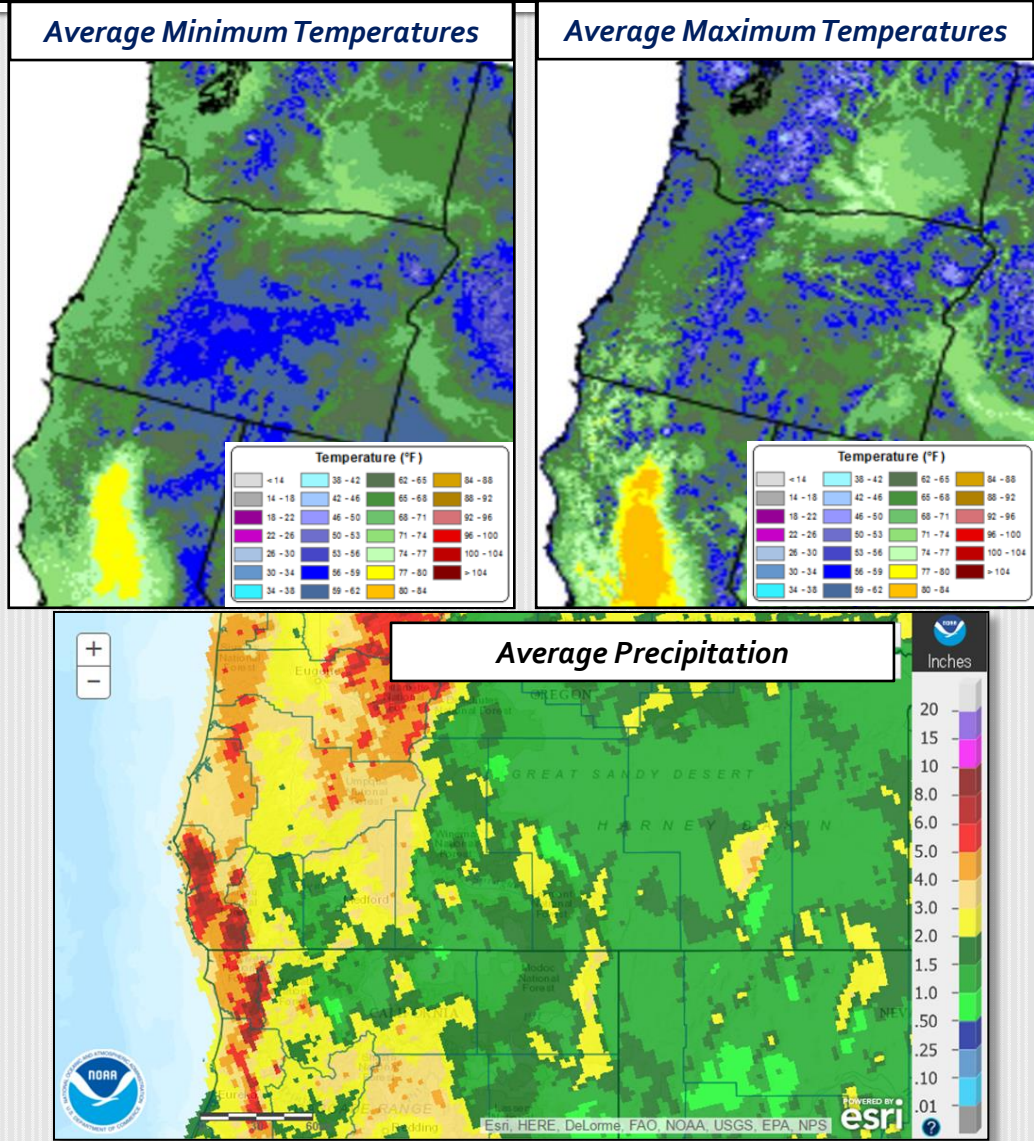


***Valid for May 2016  
Released April 30, 2016***



# Looking Ahead: Normals for May (1981-2010)

- May typically features a continued reduction in precipitation with time across the forecast area as we transition more toward the dry season and out of the wet season. While winter-like frontal systems are possible, showers and thunderstorms from more loosely organized weather systems are more common.
- Average low temperatures are usually in the 30's for the Cascades eastward, with 40's and 50's elsewhere. Average high temperatures are usually in the 50's in the mountains, 60's across much of the east side and coast, and 70's for the interior west side valleys.
- Precipitation is typically 5-10 inches for the Curry County mountains, and mostly 2-5 inches for the rest of the mountains, Umpqua Basin, and Mount Shasta area. All others areas usually receive less than 2 inches of water during the month of May.





# Outlook for May 2016

The forecast for May 2016 is for temperatures to be near to above normal and precipitation to be near to above normal. The greatest likelihood of above normal precipitation is from the Cascades eastward. The greatest likelihood of above average temperatures is for the coast and Umpqua Basin. It appears that the first half of the month will be mostly above normal for temperatures, while the second half is most likely to be at or below normal. There are indications that on or about the 3rd week of the month (15<sup>th</sup> – 22<sup>nd</sup>), it will be the wettest and coolest with below average temperatures and above average precipitation. Confidence for May's temperature and precipitation forecast is moderate.

## Expected Impact, May 2016:

*Current expectations for May 2016 would continue to result in a faster than normal melt-off of the snow pack. However, the additional precipitation and cooler temperatures mid-late month are likely to at least slow this snow pack loss. Expected conditions should also prevent fire season conditions, which are expected to begin in June.*

